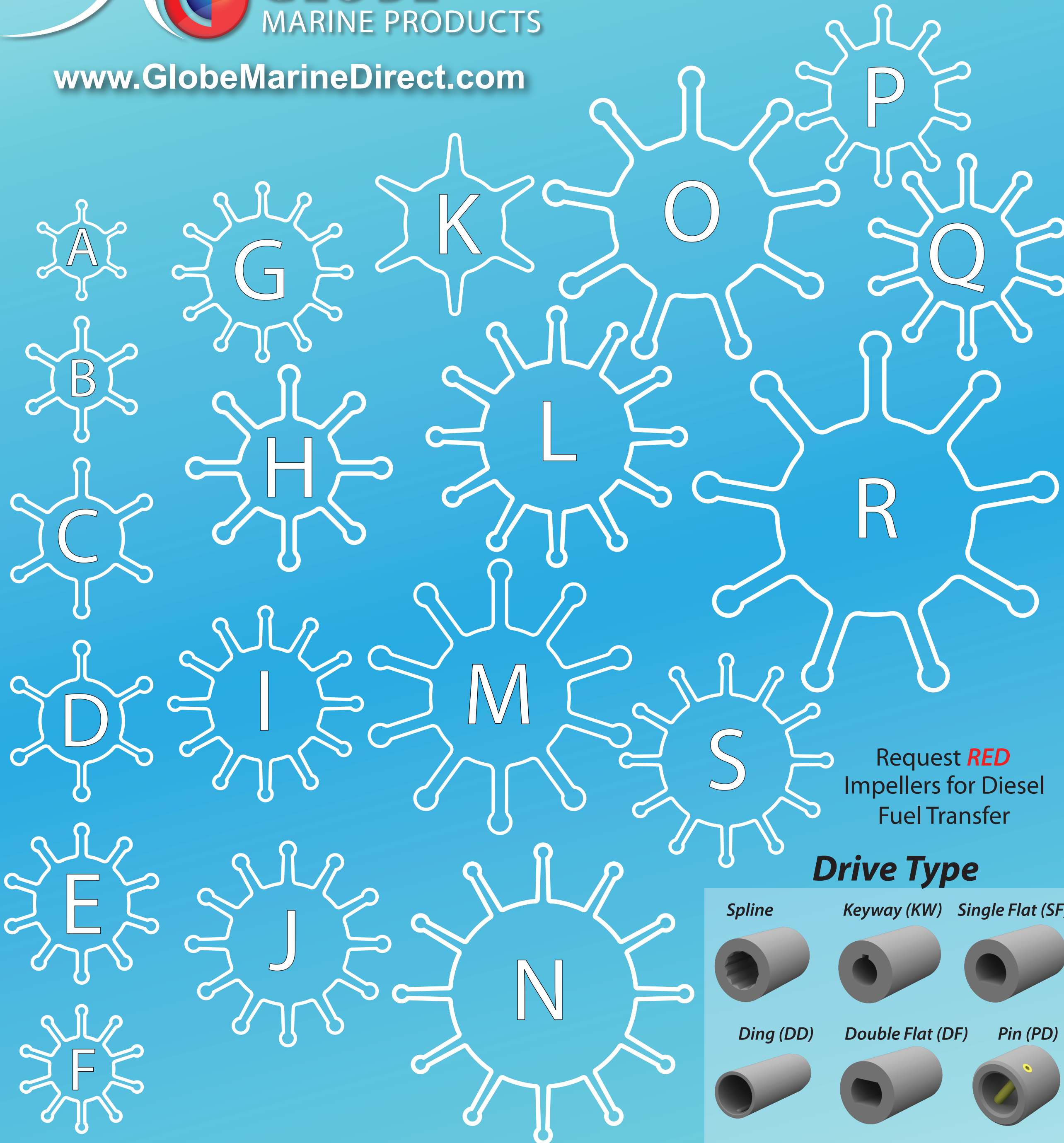
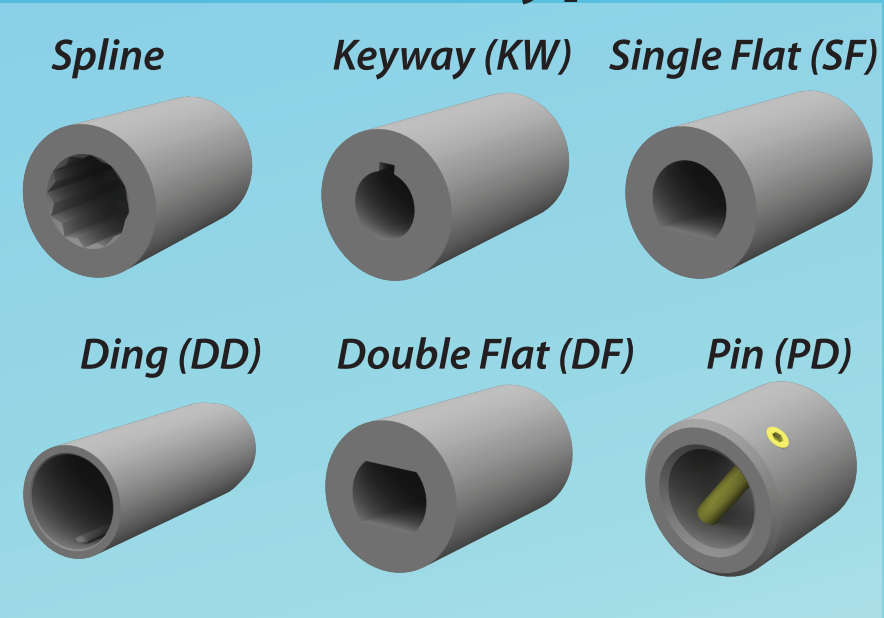


Run-Dry up to 15 minutes
Self-Lubricating for Long-Lasting Performance
TIME ON THE WATER IS PRECIOUS, TRUST THE MOST RELIABLE.



Request **RED**
Impellers for Diesel
Fuel Transfer

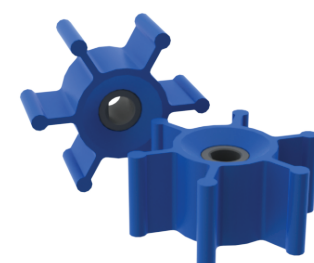
Drive Type



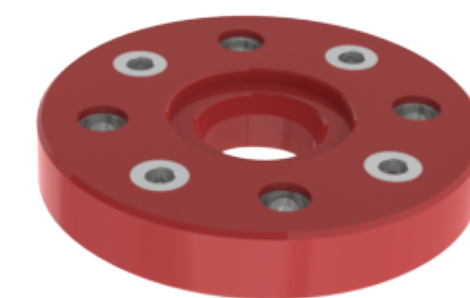
Globe Impeller Data

Silouette Letter	Globe Model Number	Impeller Diameter (in.)	Impeller Thickness (in.)	Shaft Diameter (in.)	Blade Number
A	321	1-1/4	15/32	5/16 SF	6
B	421	1-9/16	3/4	3/8 PD	6
B	1014	1-9/16	3/4	5/16 SF	6
B	1112	1-9/16	3/4	12 mm PD	6
C	219	2	7/8	5/16 PD	6
C	418	2	7/8	1/2 KW	6
C	815	2	7/8	1/2 SF	6
C	912	2	7/8	5/16 SF	6
C	6541	2	7/8	1/2 PD	6
C	331M	2	7/8	12 mm PD	6
D	025	2	7/8	5/16 SF	6
D	419	2	7/8	1/2 DF	6
E	050DF	2	7/8	5/8 DF	10
E	223	2	7/8	5/8 KW	10
F	1016	1-19/32	3/4	5/16 SF	10
G	050SS	2-1/4	1-1/14	1/2 SS DD	12
G	075	2-1/4	1-1/4	5/8	12
G	100J	2-1/4	1-7/8	5/8	12
G	100V	2-1/4	2	5/8	12
G	1101	2-1/4	1-1/4	5/8 KW	12
G	1130	2-1/4	25/32	1/2 KW	12
G	6862	2-1/4	1-1/4	5/8 DF	12
H	090	2-9/16	1-7/16	5/8	8
H	100	2-9/16	2	5/8	8
H	100DF	2-9/16	2	5/8 DF	8
H	100SS	2-9/16	2	5/8 SS DD	8
H	1111	2-9/16	3	5/8	8
H	1114	2-9/16	2	5/8 KW	8
H	1115	2-9/16	2	5/8 KW w/stop	8
H	2000	2-9/16	2	3/4 KW	8
H	2001	2-5/8	2	3/4 SF	8
H	2002	2-5/8	2	1/2 DF	8
I	610	2-7/16	7/8	5/8 KW	12
I	620	2-7/16	1-1/4	5/8 KW	12
J	625	2-9/16	1-5/8	5/8 KW	12
J	626	2-9/16	2	5/8 KW	12
J	757	2-9/16	1-1/4	5/8 KW	12
K	1015	2-1/4	3/4	3/8 SF	6
K	1000	2-11/32	1-19/64	7/8 KW	6
L	630	3-1/4	2-7/8	20 mm KW	12
M	726	3-7/16	3/4	1-17/32	10
N	200DF	3-3/4	3-1/2	1 DF	12
N	1019	3-3/4	2-1/2	1 DF	12
N	1113	3-3/4	2-1/2	1	12
N	1213	3-3/4	3-1/2	1	12
O	125	3-3/4	2-1/2	1	9
O	200	3-3/4	3-1/2	1	9
O	723	3-3/4	2-1/2	1 KW	9
P	318	2-1/4	1-1/4	5/8 DF	10
P	616	2-1/4	1-1/4	5/8	10
Q	110	2-9/16	2	5/8	10
Q	110SS	2-9/16	2	5/8 SS DD	10
Q	845	2-9/16	2-11/16	5/8	10
R	456	4-5/8	3-1/2	1 DF	9
S	821	2-19/32	3-5/32	1	12

*All Globe Impellers have a 12-point spline unless otherwise noted under shaft diameter.



Run-Dry Impeller™



DriveSaver™
Driveline Protection



UltraMount™
Vibration Isolation

